

[www.indiratrade.com](http://www.indiratrade.com)



MONDAY

# CURRENCY COMMODITIES

**WEEKLY REPORT**

**03 JUNE 2019 TO 07 JUNE 2019**

**EDGE**



**INDIRA SECURITIES PVT. LTD.**



## WEEKLY INDICES CHANGES

INDEX	CLOSE	PREV. CLOSE	Change (%)
SENSEX	39714.2	39434.72	0.71%
NIFTY	11,922.80	11,844.10	0.66%
DOW	24815	25585.7	-3.01%
NASDAQ	7453.15	7637.01	-2.41%
FTSE	7161.71	7277.73	-1.59%
NIKKEI	20354	21157	-3.80%
DAX	11,726.80	12,011.00	-2.37%
CAC	5,207.63	5,316.51	-2.05%

SS

## Market Round Up:

- U.S. Dollar, Mexican Peso Fall on Trump Tariff Threat: - The U.S. dollar fell, while the Mexican peso continued to slump, after U.S. President Donald Trump threatened to impose a 5% tariff on all Mexican goods if Mexico did not crack down on migration.
- Trump said via Twitter that he will impose the tariff on June 10 and that it will last and increase until illegal immigration is stopped.
- Meanwhile, the greenback was also held back by data showing a rise in inflation, supporting the case for the Federal Reserve to keep interest rates unchanged.
- The U.S. dollar index, which measures the greenback's strength against a basket of six major currencies, lost 0.4% to 97.667.
- The dollar was lower against the safe-haven Japanese yen, with USD/JPY falling 0.9% to 108.61
- Elsewhere, the euro surged on the weaker dollar, with EUR/USD up 0.4% to 1.1173, while cable rose 0.2% with GBP/USD at 1.2630.
- Wall Street Falls as Trump Threatens Tariffs on Mexico: - Wall Street slumped Friday as U.S. President Donald Trump's Mexico tariff threat increased investor fear of a global recession

## RBI REFERENCE RATE

INDEX	CLOSE	PREV. CLOSE
USDINR	69.8058	69.6096
EURINR	77.7288	77.9744
JPYINR	64.0800	63.5500
GBPINR	88.0093	88.3021

## FII FIGURES

DATE	FII FIGURES IN CRORE
27/05	1215
28/05	-501
29/05	-304
30/05	1664
31/05	676.00
NET	+2750

## DII FIGURES

DATE	DII FIGURES IN CRORE
27/05	-327
28/05	269
29/05	-189
30/05	-1122
31/05	394.00
NET	-975



## DOLLAR INDEX CHART



US Dollar Index	
RSI(14)	BUY
STOCH(9,6)	BUY
STOCHRSI(14)	BUY
MACD(12,26)	BUY
ADX(14)	SELL
Williams %R	BUY
CCI(14)	BUY
Highs/Lows(14)	BUY
Ultimate Oscillator	BUY
ROC	BUY
BUY	8
SELL	1
NEUTRAL	0
SUMMARY	STRONG BULLISH

## USDINR TECHNICAL CHART (INDIAN RUPEE)



USDINR.Rolling	
RSI(14)	SELL
STOCH(9,6)	SELL
STOCHRSI(14)	SELL
MACD(12,26)	BUY
ADX(14)	SELL
Williams %R	NETURAL
CCI(14)	BUY
Highs/Lows(14)	0
Ultimate Oscillator	BUY
ROC	SELL
BUY	3
SELL	6
NEUTRAL	1
SUMMARY	MILD BEARISH





## DOMESTIC CURRENCY

Domestic	S2	S1	PIVOT	R1	R2
USDINR	68.97	69.26	69.67	69.96	70.37
EURINR	76.84	77.34	77.92	78.43	79.01
GBPINR	87.12	87.7	88.38	88.96	89.64
JPYINR	62.47	62.95	63.39	63.87	64.31

## GLOBAL CURRENCY

Global	S2	S1	PIVOT	R1	R2
DOLLAR INDEX	97.01	97.3	97.84	98.13	98.67
EURUSD	1.11	1.11	1.12	1.12	1.13
GBPUSD	1.25	1.26	1.27	1.28	1.29
USDJPY	108.78	109.17	109.84	110.23	110.9

## CURRENCY PERFORMANCE

CURRENCY	CLOSE PRICE	DAY	WEEK	MONTHLY	YEARLY
EURO	1.11866	0.18%	-0.08%	-0.06%	-4.37%
POUND	1.26509	0.16%	-0.20%	-3.86%	-4.95%
AUSTRALIAN DOLLAR	0.69553	0.25%	0.55%	-0.55%	-9.00%
NEWZEALAND DOLLAR	0.65525	0.28%	0.15%	-0.88%	-6.75%
YEN	108.17	-0.08%	-1.21%	-2.39%	-1.48%
YUAN	6.92204	-0.20%	0.23%	2.23%	8.11%
SWISS FRANC	0.99806	-0.27%	-0.56%	-1.93%	1.06%
CANADIAN DOLLAR	1.34955	-0.12%	0.40%	0.37%	4.40%
MEXICAN PESO	19.6193	0.04%	2.97%	3.37%	-2.27%
INDIAN RUPEE	69.532	-0.05%	0.07%	0.24%	3.69%
BRAZILIAN REAL	3.9225	0.02%	-2.46%	0.08%	4.71%
RUSSIAN RUBBLE	65.3592	-0.32%	1.46%	0.82%	5.33%
DOLLAR INDEX	97.61	-0.15%	-0.01%	0.13%	3.82%
KORREAN WON	1179.91	-0.66%	-0.31%	1.01%	10.34%
SOUTH AFRICAN RAND	14.5548	-0.17%	0.99%	0.65%	15.94%
SINGAPORE DOLLAR	1.37074	-0.19%	-0.31%	0.57%	2.56%
HONGKONG DOLLAR	7.83936	0.02%	-0.13%	-0.09%	-0.08%

# COMMODITIES

## FUNDAMENTAL OF COMMODITIES

### MAJOR COMMODITIES

#### MCX ENERGY WEEKLY

Commodity	S2	S1	Pivot	R1	R2
Crude oil	3717.7	3894.3	4177.7	4354.3	4637.7
Natural Gas	170.3	175.3	181.9	186.9	193.5

#### MCX BASE METAL WEEKLY

Commodity	S2	S1	Pivot	R1	R2
Copper	402.4	408.9	417.2	423.7	432.0
Zinc	206.4	210.2	212.6	216.4	218.8
Lead	122.8	124.6	125.9	127.7	129.1
Nickel	810.1	836.4	852.0	878.3	893.9

#### PRECIOUS METAL WEEKLY

Commodity	S2	S1	Pivot	R1	R2
Gold	30996.0	31263.0	31499.0	31766.0	32002.0
Silver	35709.3	36046.7	36393.3	36730.7	37077.3

### Updates:

- Gold Prices Head Towards \$1,300 as Trump Tariffs Boost Safe Havens: - Gold prices rose on Friday amid news of unexpected tariffs on Mexican goods, while heightened Sino-U.S. trade tensions also attracted safe-haven demand. U.S. President Donald Trump added further fuel to trade tensions with a surprise announcement of new tariffs on Mexico.
- Oil Prices Head for Biggest Monthly Slide This Year as Tariff Tensions Mount: Oil prices sank by more than 2% on Friday, putting crude on track for its worst monthly decline since November, as U.S. President Donald Trump added further fuel to trade conflicts with new tariffs on Mexico.

International Commodity	S2	S1	Pivot	R1	R2	CMP	PREV CLOSE
Gold COMEX	\$1,262.00	\$1,273.00	\$1,280.00	\$1,291.00	\$1,298.00	\$1,292.00	\$1,284.00
SILVER COMEX	14.23	14.39	14.52	14.68	14.81	14.49	14.56
NYMEX CRUDE	53.34	55.99	59.97	62.62	66.6	56.59	58.63
BRENT CRUDE	63.49	66.36	69.88	72.75	76.27	65.19	69.22



# COMMODITIES

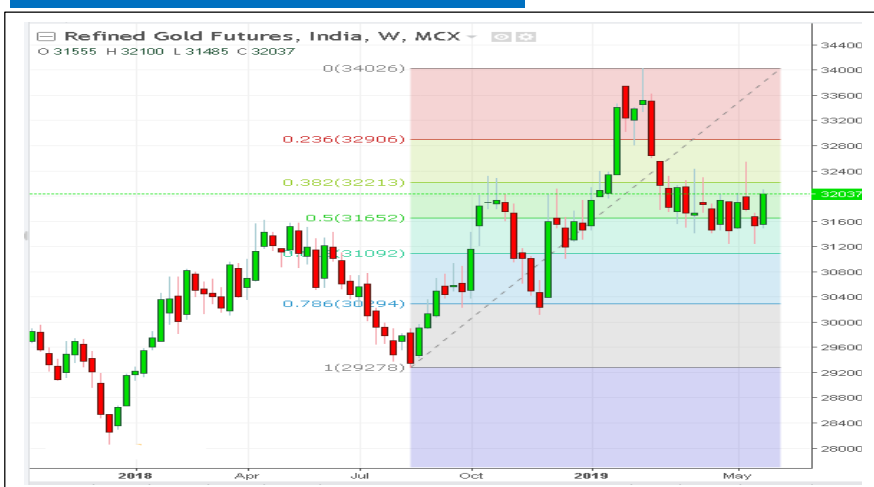
## MAJOR COMMODITIES

Commodity Major	Price	Day	Weekly	Monthly	Yearly
<b>Crude Oil</b>	53.0532	-1.03%	-10.38%	-12.63%	-18.05%
<b>Brent</b>	60.85	-5.64%	-13.21%	-12.70%	-19.18%
<b>Natural gas</b>	2.469	0.65%	-4.13%	-2.18%	-15.74%
<b>Gold</b>	1312.89	0.50%	2.19%	2.56%	1.65%
<b>Silver</b>	14.6784	0.55%	0.61%	-1.49%	-10.30%
<b>Platinum</b>	801.73	1.29%	-0.53%	-8.11%	-10.97%
<b>Palladium</b>	1344.05	1.44%	0.56%	0.53%	35.30%
<b>Copper</b>	2.6493	0.02%	-2.67%	-6.62%	-15.26%
<b>Lead</b>	1794.5	0.21%	-1.14%	-2.15%	-28.21%
<b>Aluminum</b>	1794.5	0.70%	-0.31%	-1.13%	-22.45%
<b>Tin</b>	18715	-0.32%	-3.03%	-4.27%	-9.04%
<b>Zinc</b>	2524	-1.44%	-1.41%	-8.91%	-19.15%





## MCX GOLD CHART



Commodity	S2	S1	Pivot	R1	R2
Gold	30996.0	31263.0	31499.0	31766.0	32002.0

### GOLD TECHNICAL INDICATOR

RSI(14)	BUY
STOCH(9,6)	BUY
STOCHRSI(14)	BUY
MACD(12,26)	SELL
ADX(14)	SELL
Williams %R	NETURAL
CCI(14)	SELL
Highs/Lows(14)	BUY
Ultimate Oscillator	SELL
ROC	SELL
BUY	4
SELL	5
NEUTRAL	1
SUMMARY	NETURAL

## GOLD INTERNATIONAL CHART



Commodity	S2	S1	Pivot	R1	R2
Gold	\$1,262.0	\$1,273.0	\$1,280.0	\$1,291.0	\$1,298.0

### GOLD INTERNATIONAL TECHNICAL INDICATOR

RSI(14)	BUY
STOCH(9,6)	BUY
STOCHRSI(14)	BUY
MACD(12,26)	SELL
ADX(14)	SELL
Williams %R	NETURAL
CCI(14)	SELL
Highs/Lows(14)	BUY
Ultimate Oscillator	BUY
ROC	SELL
BUY	5
SELL	4
NEUTRAL	1
SUMMARY	NETURAL



## MCX SILVER CHART



Commodity	S2	S1	Pivot	R1	R2
Silver	35709.3	36046.7	36393.3	36730.7	37077.3

### SILVER TECHNICAL INDICATOR

RSI(14)	SELL
STOCH(9,6)	SELL
STOCHRSI(14)	SELL
MACD(12,26)	SELL
ADX(14)	SELL
Williams %R	SELL
CCI(14)	SELL
Highs/Lows(14)	BUY
Ultimate Oscillator	SELL
ROC	SELL
BUY	1
SELL	9
NEUTRAL	0
SUMMARY	STRONG BEARISH

## SILVER INTERNATIONAL CHART



Commodity	S2	S1	Pivot	R1	R2
Silver	\$14.2	\$14.4	\$14.5	\$14.7	\$14.8

### SILVER INTERNATIONAL TECHNICAL INDICATOR

RSI(14)	SELL
STOCH(9,6)	SELL
STOCHRSI(14)	BUY
MACD(12,26)	SELL
ADX(14)	SELL
Williams %R	SELL
CCI(14)	SELL
Highs/Lows(14)	BUY
Ultimate Oscillator	BUY
ROC	SELL
BUY	3
SELL	7
NEUTRAL	0
SUMMARY	STRONG BEARISH





## MCX COPPER CHART

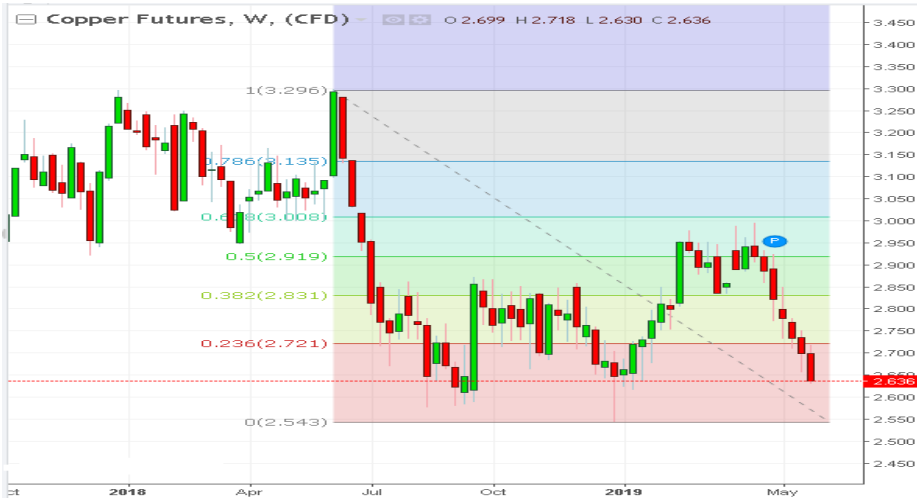


Commodity	S2	S1	Pivot	R1	R2
Copper	402.4	408.9	417.2	423.7	432.0

### COPPER TECHNICAL INDICATOR

RSI(14)	SELL
STOCH(9,6)	SELL
STOCHRSI(14)	SELL
MACD(12,26)	SELL
ADX(14)	SELL
Williams %R	SELL
CCI(14)	SELL
Highs/Lows(14)	BUY
Ultimate Oscillator	SELL
ROC	SELL
BUY	1
SELL	9
NEUTRAL	0
SUMMARY	STRONG BEARISH

## COPPER INTERNATIONAL CHART



Commodity	S2	S1	Pivot	R1	R2
Copper	\$2.610	\$2.650	\$2.700	\$2.750	\$2.800

### COPPER INTERNATIONAL TECHNICAL INDICATOR

RSI(14)	SELL
STOCH(9,6)	SELL
STOCHRSI(14)	SELL
MACD(12,26)	SELL
ADX(14)	SELL
Williams %R	SELL
CCI(14)	SELL
Highs/Lows(14)	BUY
Ultimate Oscillator	SELL
ROC	SELL
BUY	1
SELL	9
NEUTRAL	0
SUMMARY	STRONG BEARISH



## MCX CRUDE CHART



Commodity	S2	S1	Pivot	R1	R2
Crude oil	3717.7	3894.3	4177.7	4354.3	4637.7

## NYMEX CRUDE CHART



Commodity	S2	S1	Pivot	R1	R2
Crude oil	\$53.3	\$56.0	\$60.0	\$62.6	\$66.6

### CRUDEOIL TECHNICAL INDICATOR

RSI(14)	SELL
STOCH(9,6)	SELL
STOCHRSI(14)	SELL
MACD(12,26)	SELL
ADX(14)	SELL
Williams %R	SELL
CCI(14)	SELL
Highs/Lows(14)	BUY
Ultimate Oscillator	SELL
ROC	SELL
BUY	1
SELL	9
NEUTRAL	0
SUMMARY	STRONG BEARISH

### CRUDE.OILNYM TECHNICAL INDICATOR

RSI(14)	SELL
STOCH(9,6)	SELL
STOCHRSI(14)	SELL
MACD(12,26)	SELL
ADX(14)	SELL
Williams %R	SELL
CCI(14)	SELL
Highs/Lows(14)	BUY
Ultimate Oscillator	SELL
ROC	BUY
BUY	1
SELL	8
NEUTRAL	0
SUMMARY	STRONG BEARISH



## MCX NATURAL GAS



Commodity	S2	S1	Pivot	R1	R2
Natural Gas	170.3	175.3	181.9	186.9	193.5

### NATURALGAS TECHNICAL INDICATOR

RSI(14)	SELL
STOCH(9,6)	SELL
STOCHRSI(14)	SELL
MACD(12,26)	BUY
ADX(14)	SELL
Williams %R	SELL
CCI(14)	SELL
Highs/Lows(14)	BUY
Ultimate Oscillator	SELL
ROC	SELL
BUY	2
SELL	8
NEUTRAL	0
SUMMARY	STRONG BEARISH

## NATURAL GAS INTERNATIONAL



Commodity	S2	S1	Pivot	R1	R2
Natural Gas	\$2.450	\$2.530	\$2.620	\$2.690	\$2.780

### NATURAL GAS INTER. TECHNICAL INDICATOR

RSI(14)	SELL
STOCH(9,6)	SELL
STOCHRSI(14)	SELL
MACD(12,26)	BUY
ADX(14)	SELL
Williams %R	NETURAL
CCI(14)	SELL
Highs/Lows(14)	BUY
Ultimate Oscillator	SELL
ROC	SELL
BUY	2
SELL	7
NEUTRAL	1
SUMMARY	STRONG BEARISH



# IMP ECONOMOIC DATA TO WATCH FOR THE WEEK

DATE	TIME	CURRENCY	ECONOMIC DATA	FORECAST	PREVIOUS
MonJun 3	7:15am	CNY	Caixin Manufacturing PMI	50	50.2
	2:00pm	GBP	Manufacturing PMI	52.5	53.1
	6:40pm	USD	FOMC Member Quarles Speaks		
	7:30pm	USD	ISM Manufacturing PMI	53	52.8
	10:55pm	USD	FOMC Member Bullard Speaks		
TueJun 4	2:30pm	EUR	CPI Flash Estimate y/y	1.40%	1.70%
		EUR	Core CPI Flash Estimate y/y	1.00%	1.30%
	6:00pm	USD	FOMC Member Williams Speaks		
	7:25pm	USD	Fed Chair Powell Speaks		
WedJun 5	1:15pm	GBP	MPC Member Ramsden Speaks		
	2:00pm	GBP	Services PMI	50.6	50.4
	5:45pm	USD	ADP Non-Farm Employment Change	185K	275K
	7:15pm	USD	FOMC Member Clarida Speaks		
	7:30pm	USD	ISM Non-Manufacturing PMI	55.6	55.5
		USD	FOMC Member Bowman Speaks		
ThuJun 6	1:55pm	JPY	BOJ Gov Kuroda Speaks		
	2:30pm	GBP	BOE Gov Carney Speaks		
	5:15pm	EUR	Monetary Policy Statement		
		EUR	Main Refinancing Rate	0.00%	0.00%
	6:00pm	EUR	ECB Press Conference		
	10:30pm	USD	FOMC Member Williams Speaks		
FriJun 7	6:00pm	USD	Average Hourly Earnings m/m	0.30%	0.20%
		USD	Non-Farm Employment Change	180K	263K
		USD	Unemployment Rate	3.60%	3.60%



204 Amardarshan Building 3rd floor Saket Nagar , Indore-452018

**Call:** 0731-4797170-173 **Mob:** +91-9303172345 / **Toll Free:** 18001030059 / **SMS:** <INDIRA> to 56070

## DISCLAIMER

This report is for private circulation within the Indira Group. This report is strictly confidential and for information of the selected recipient only and may not be altered in any way, transmitted to, copied or distributed, in part or in whole, to any other person or to the media or reproduced in any form. This report should not be construed as an offer or solicitation to buy or sell any securities or any interest in securities. It does not constitute a personal recommendation or take into account the particular investment objectives, financial situations, or any such factor. The information, opinions estimates and forecasts contained here have been obtained from, or are based upon, sources we believe to be reliable, but no representation of warranty, express or implied, is made by us to their accuracy or completeness. Opinions expressed are our current opinions as of our current opinions as of the data appearing on this material only and are subject to change without notice.